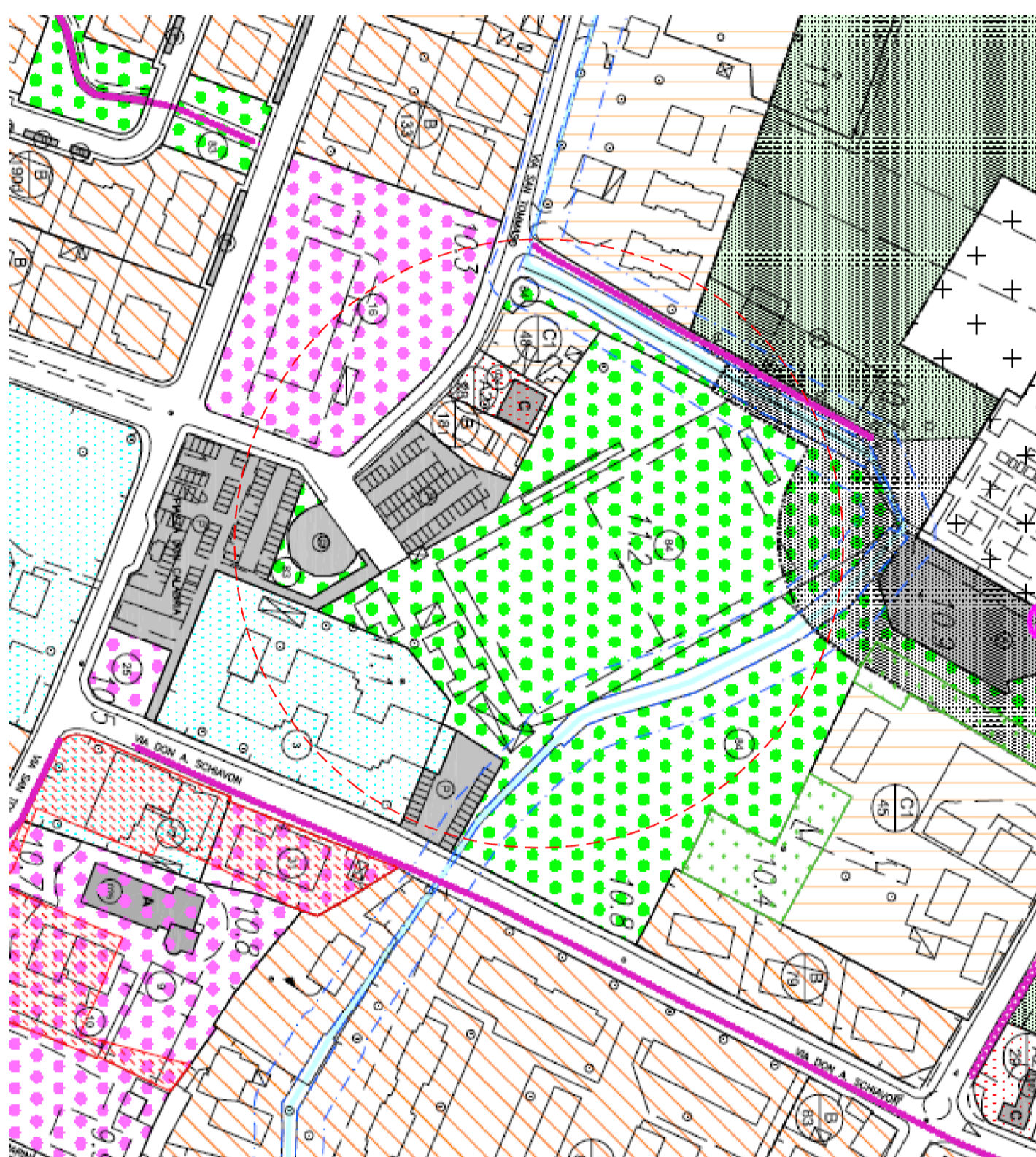
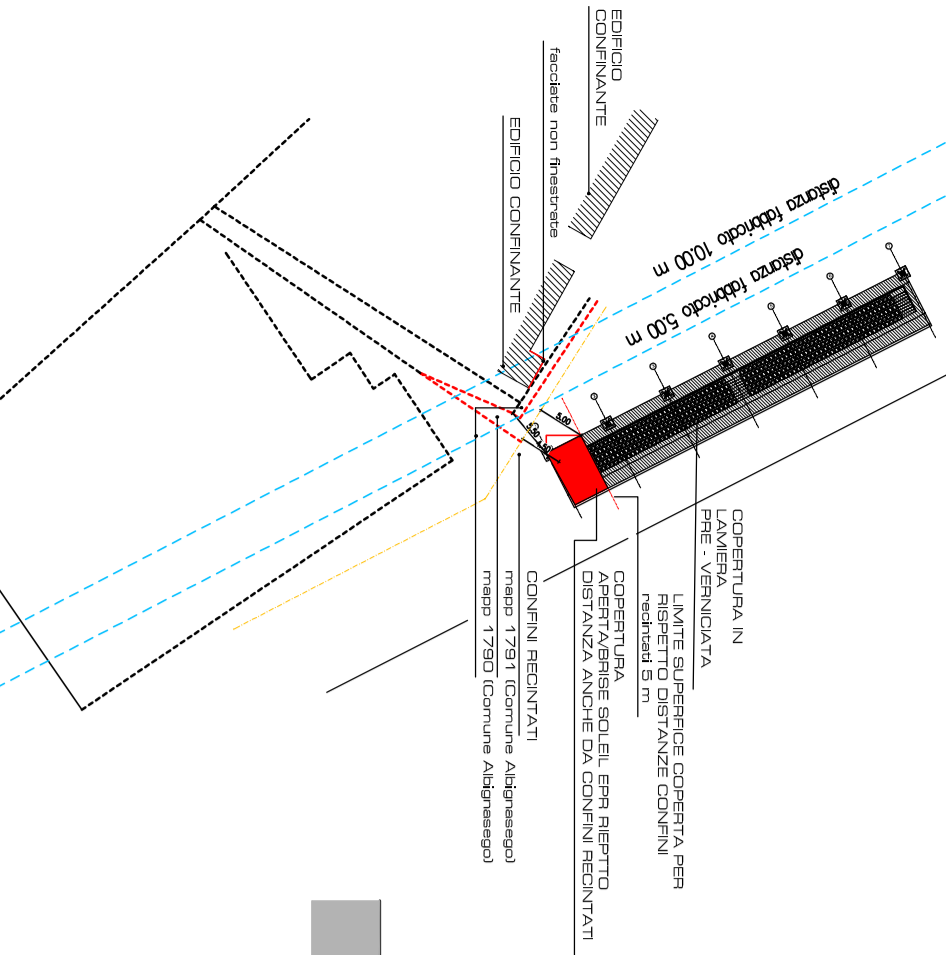
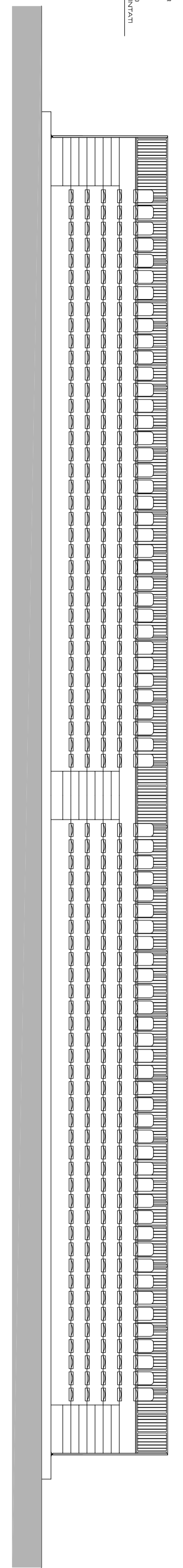
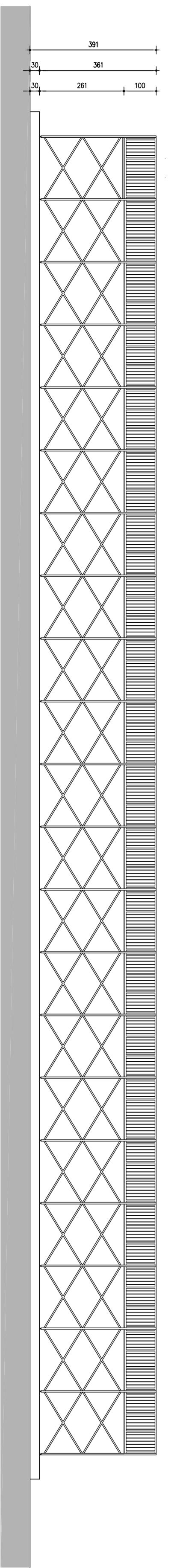
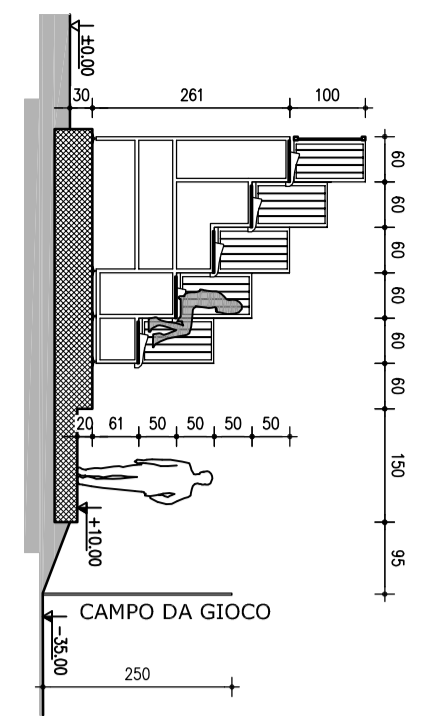
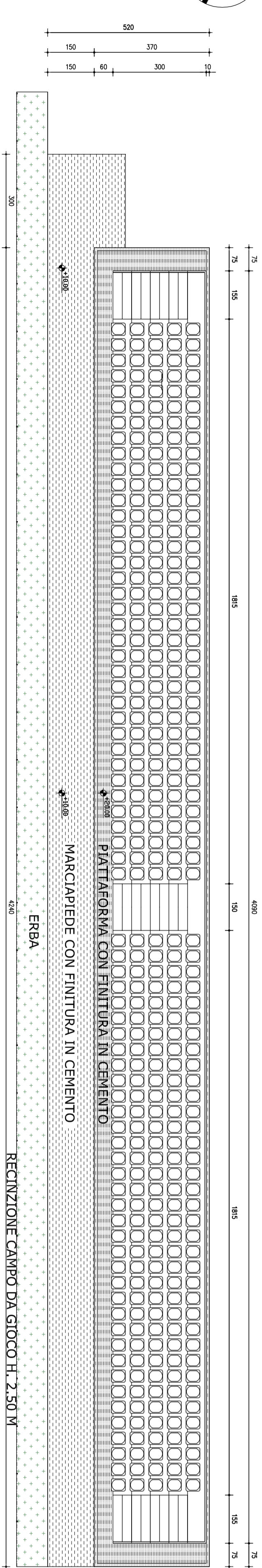
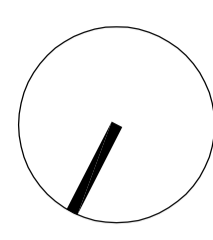


ESTRATTO DI MAPPA N.C.E.U. fg.6 map. 234 sub 123
scale 1:2000



ESTRATTO DI PRG
scale 1:2000



SAVORANI
architectural engineering

COMUNE DI ALBIGNASEGO
PROVINCIA DI PADOVA



PROGETTO ESECUTIVO

SISTEMAZIONE ED ADEGUAMENTO
TRIBUNA DI CALDO STADIO
"M. MONTAGNA"



progettista:
Ing. Enrico SAVORANI

committente:
COMUNE DI ALBIGNASEGO (PD)

tracce
01 STATO DI FATTO

APR 20

E1

aggiornato
18/04/2020

file
ST_372_19_PROGETTO_ESECUTIVO